

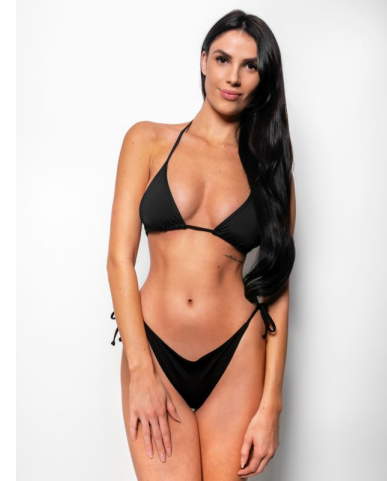
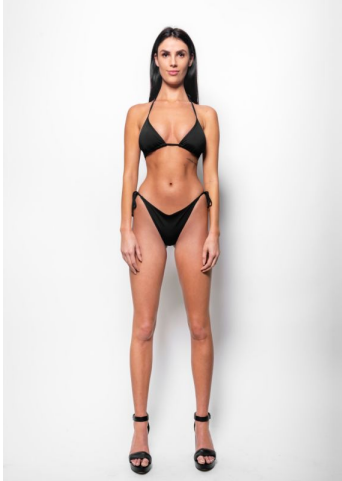
ENIG MODELS



Corrinne Jones

Height : 5'9" / 175 cm | Bust : 35" / 89 cm | Waist : 25.5" / 65 cm | Hips : 34" / 86 cm | Shoe : 9.0 US / 6.5 UK | Hair Colour : Dark Brown | Eyes : Light Brown

ENIG MODELS



Corrinne Jones

Height : 5'9" / 175 cm | Bust : 35" / 89 cm | Waist : 25.5" / 65 cm | Hips : 34" / 86 cm | Shoe : 9.0 US / 6.5 UK | Hair Colour : Dark Brown | Eyes : Light Brown